

Comparison of Expectation of Life, by Population Census Mortality

Population Census

Males

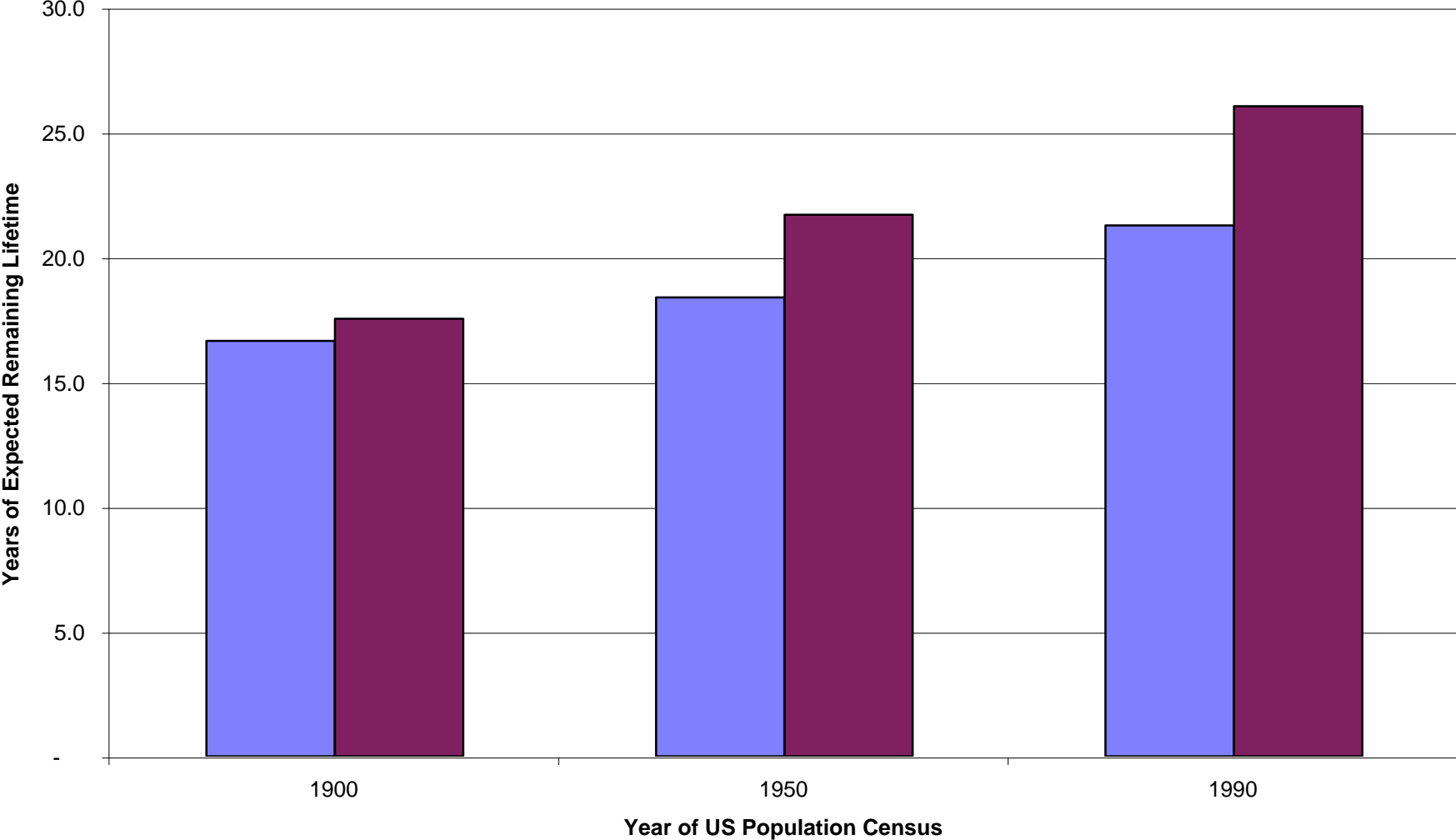
Age	1900	1950	1990
55	16.6456	18.3850	21.2687
56	16.0258	17.7142	20.4996
57	15.4162	17.0576	19.7430
58	14.8146	16.4154	18.9988
59	14.2200	15.7874	18.2672
60	13.6330	15.1744	17.5484
61	13.0550	14.5763	16.8433
62	12.4873	13.9912	16.1535
63	11.9314	13.4168	15.4802
64	11.3884	12.8519	14.8246
65	10.8590	12.2967	14.1877
66	10.3438	11.7524	13.5694
67	9.8436	11.2205	12.9681
68	9.3593	10.7026	12.3814
69	8.8914	10.2000	11.8083
70	8.4416	9.7134	11.2487

Females

Age	1900	1950	1990
55	17.5274	21.7023	26.0441
56	16.8832	20.9217	25.2016
57	16.2475	20.1511	24.3688
58	15.6200	19.3921	23.5464
59	15.0007	18.6461	22.7350
60	14.3907	17.9147	21.9352
61	13.7911	17.1981	21.1472
62	13.2017	16.4933	20.3711
63	12.6224	15.7967	19.6068
64	12.0532	15.1065	18.8541
65	11.4943	14.4233	18.1140
66	10.9473	13.7499	17.3868
67	10.4149	13.0903	16.6719
68	9.9007	12.4492	15.9682
69	9.4067	11.8297	15.2754
70	8.9353	11.2329	14.5945

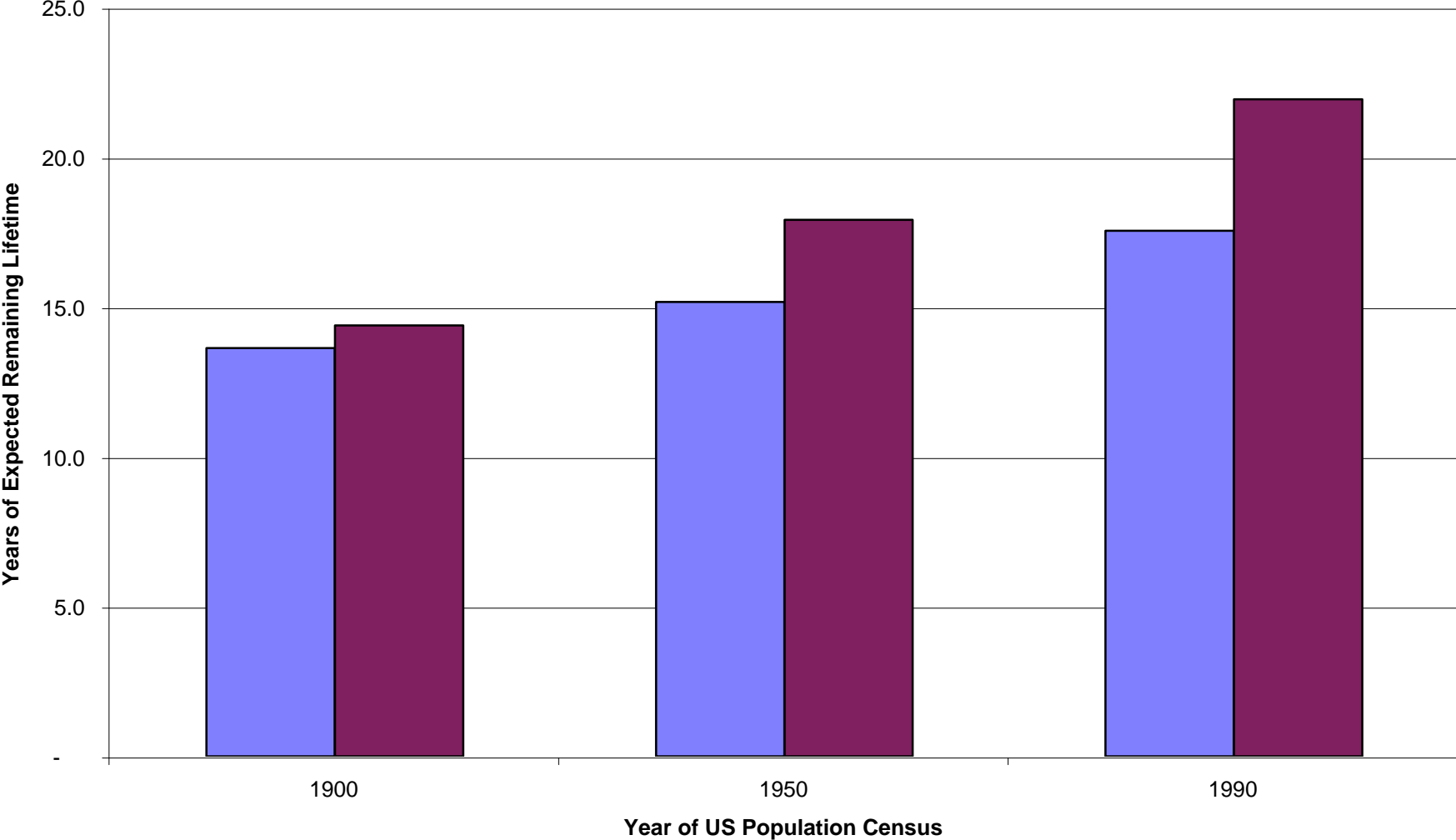
Expectation of Life by Census Year, age 55

Males Females



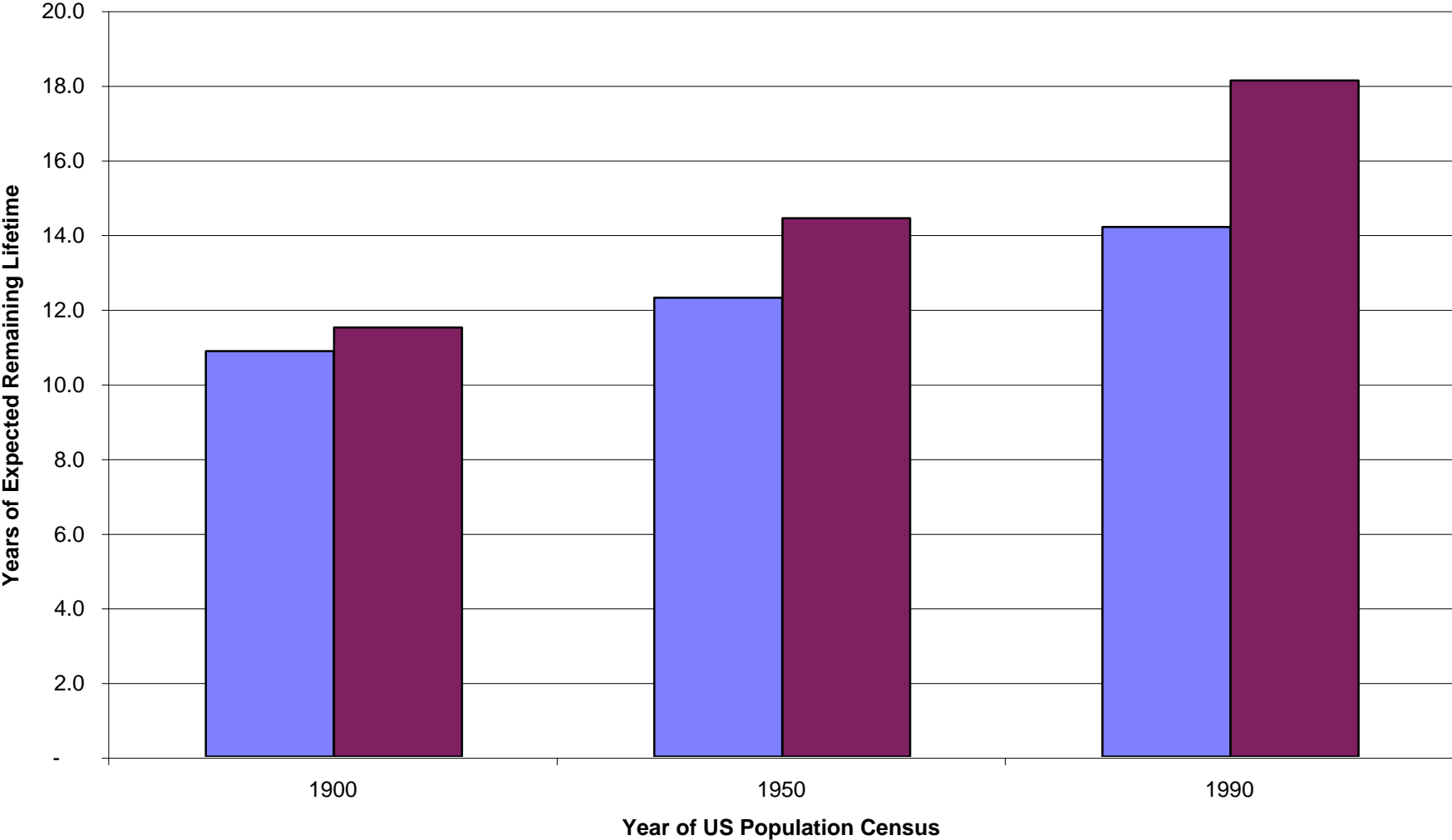
Expectation of Life by Census Year, age 60

Males Females



Expectation of Life by Census Year, Age 65

Males Females



Expectation of Life by Census Year, Age 70

Males Females

